

n

g Tree!

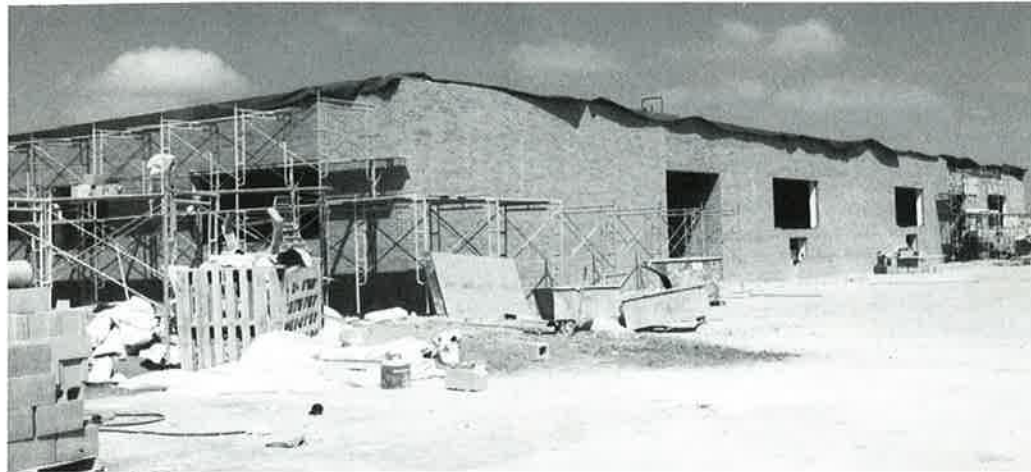
tasks of  
n crew  
large blue  
n its  
in front  
rance, to

repara-  
ovation of  
and room  
w  
offices.



A front-end loader (far left) moves rocks and dirt in the south end construction site. Later in the project, a crane was necessary to lift supplies to workers inside the new walls.

(Left) The end is in sight - Brickwork adorns the outside walls of the area destined to be new classrooms on the south side of the high school, while a construction worker (below) pauses in his work to pose for the camera.



Almost Ready For Occupancy - Soon these hallways will be filled with students and teachers making their way to classes in the 2000-2001 school year.