

## Sixth Ranked Cougars Bid

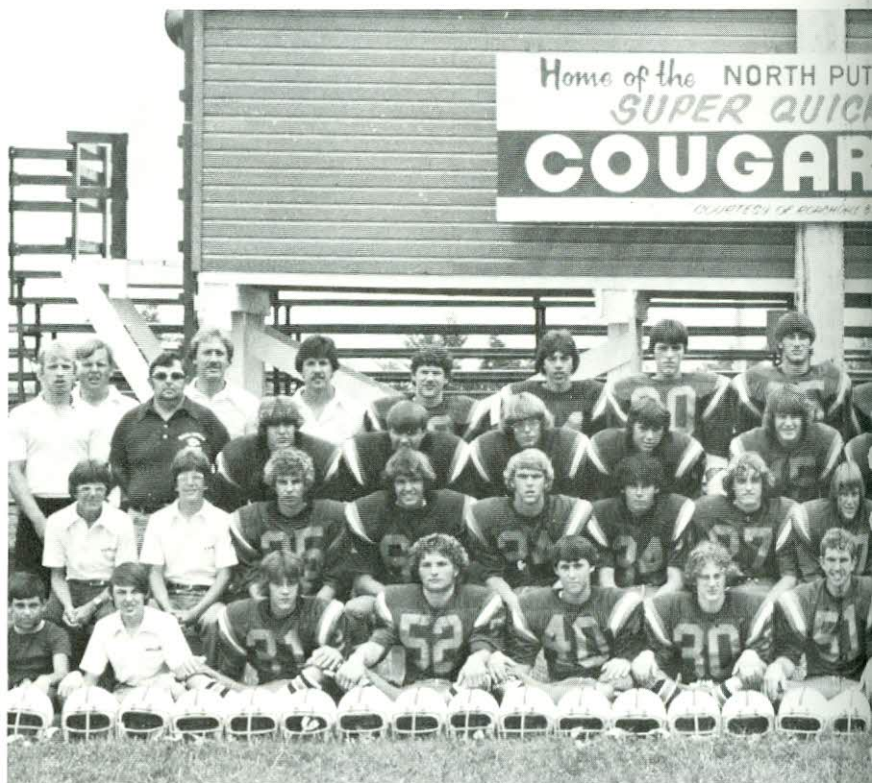
"Tough against the pass. . . Tough against the rush. The Orange did swarm. . . The Orange did CRUSH!!!!"

This slogan represented the Cougar defense very well for its 9-1 WCC Conference Champs season, led by starters Steve Tillotson, Troy Bryan, Tom Purdue, Matt Brown, David McGaughey, Dwight Griffin, Glenn Logan, Chad Colvin, Hank Lawson, Bill Brown, and Kevin Mannix. They only allowed 765 yards rushing to 10 opponents combined. That averaged out to only 2.4 yards per carry. They gave up only 3 touchdowns passing and only 424 yards. And last but not least, allowed 29 points in conference games to clinch the title of WCC CHAMPS!

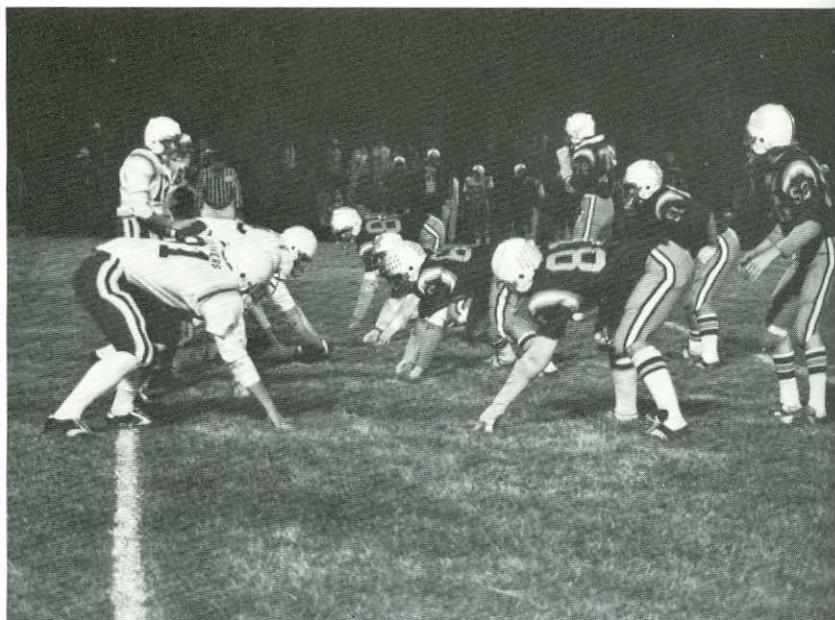
The Super-Quick offense rushed for 1,375 yards on the ground with 11 touchdowns. The leading rusher was Matt Brown with 501 yards and an average of 3.66 yards per carry with 7 touchdowns. David McBride gained the most yards per carry with 4.44. Marty Fordice rushed for 356 yards and averaged 4.05 yards per carry with 4 touchdowns. Also starting on the Super-Quick offense was Danny Simon, who passed for 809 yards; Chet Clodfelter, who passed for 390 yards; David McGaughey, with 56 yards, Dwight Griffin, Troy Bryan, Steve Tillotson, Scott Mason, and Tom Purdue.

The Orange and Blue left their mark on the WCC Conference and the country by ending the season 9-1, sixth ranked in the state, and by sending five guys to the state teams. These five guys were Troy Bryan, Steve Tillotson, David McGaughey, Glenn Logan, and Dwight Griffin.

The B-teams record of 6-1 and the return of all conference kicker, Glen Logan, and Chet Clodfelter, Jerry McGaughey, and Kevin Mannix have Cougar fans looking forward to next year.



The members of the Super-Quick Cougars were M. Wertz (mgr.), S. Franklin, T. Purdue, M. Brown, S. Anderson, T. Bryan, J. Smith, B. Vincent, R. White, C. Kelly, S. Mason, D. Tyler, D. Cash; Row 2: B. Steward (mgr.), B. Steward (mgr.), S. McBride, M. Bryan, D. McBride, K. Mannix, P. Purdue, M. Joyce, T. Franklin, D. Williams, B. Smith, C. Clark, S. Greeson, L. Lawhorm, D. Evans, A. Fowler, T. Murphy;



Ready. . .Set. . .Go